

FCA 3442

Automatic Double-Clipper



innovative · reliable · leading

poly-clip[®]
SYSTEM

FCA 3442

- For chubs up to 75 mm in diameter
- Up to 130 cycles per minute
- Dependable silent operation
- EASY TOUCH for easy and comfortable operation
- Stainless steel construction ensures long machine life

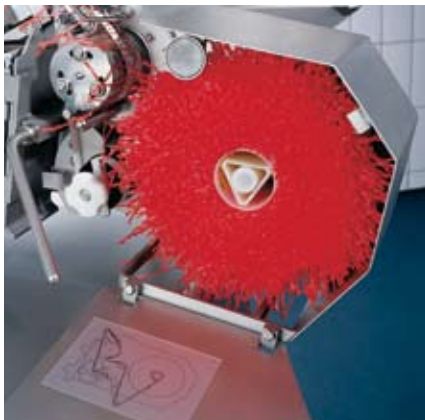
Applications

The automatic double-clipper FCA 3442 closes all plastic, fibrous and collagen casings up to a calibre of 75 mm, and more in the case of special-purpose applications. Flexibility in the calibre range is achieved by means of rapid conversion of the clip size from 12 to 15 mm and the voiding distance. The automatic looper (GSA) allows loops to be clipped in so that chains of sausages and single sausages can be hung.

Advantages

- Permanently silent operation
- Compact construction ensures easy handling
- Voiding separator ensures clean sausage tails
- Easy machine operation with the graphical user interface EASY TOUCH
- Product parameter available via program memory
- Product-related speed control
- External, reproducible clip pressure setting

Automatic looper GSA 20: Tapeless loops are applied



- Trend-setting safety standards for the operator through two-handed start of first clip
- Easy to manoeuvre by means of steering wheel and relocatable steering bar
- Stainless steel construction provides resistance against aggressive cleaning agents
- Smooth surfaces without outside screws allow easy sanitary cleaning
- Service-friendly, easily removable external casing
- No failure in electronics by reason of wetness due to completely enclosed switch cabinet

Optional equipment

- Automatic looper (GSA), retractable
- String dispenser
- Casing end switch
- Pneumatic casing brake
- Clip coding
- Labelling system
- Special-purpose equipment for rook sausages and sucuk sausages

Function and operation

The FCA 3442 is mechanically and electrically connected to the filling machine whereby the portions are taken over by the voiding separator exactly to the gram and closed as single sausages, rings or chains. Trend-setting safety standards at commencement of production is guaranteed by the two-handed operation required to trigger the first clip. The automatic double-clipper is electronically

Universal in use and high performance – special feature double feeding tube for specialities such as sucuk sausages





controlled via PLC and servo-frequency converter and driven wear-free. Product-specific settings can be called up from the programme memory. Operator and service levels are clearly separated from one another whereby the service level is secured via a code. The holder for the casing brake is also suited for use of the optional pneumatic casing brake. The machine is easily swung on and off to allow casings to be changed.



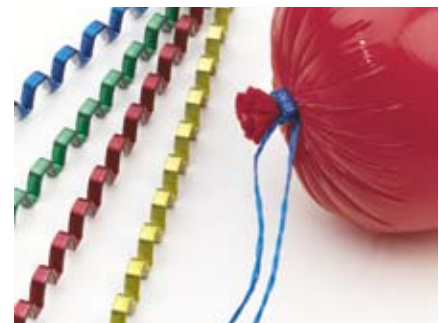
Product identification with labels which are printed and clipped in during production

Combinability

The FCA 3442 can be coupled with the TSA (transfer-sealing-machine). The TSA uses flat roll stock film. A ready-to-fill tube is transferred to the clipping machine.

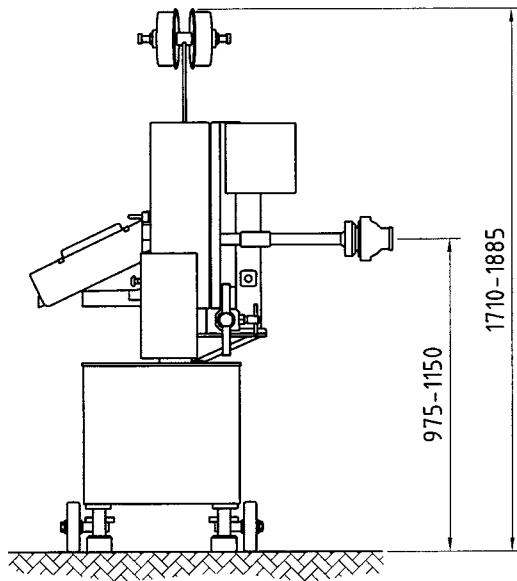
Clip System Solutions

The complete machine, clip and loop system from one source ensures efficient, trouble-free production. The Original Clip from Poly-clip guarantees top quality. Manufactured to strictest quality standards, certified to ISO 9001:2000 and tuned precisely to the production process. The patented genuine, food-proof, safety coating using Poly-clip SAFE-COAT technology ensures trouble-free production and a no-worry product warranty. Poly-clip System is the world's leading provider of Clip System Solutions.

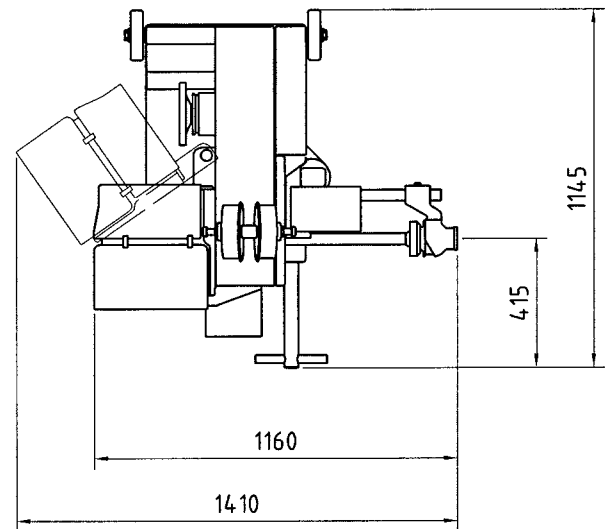


Product identification with coloured clips and loops and clip coding





Front view



Top view

| | |
|---------------------------------|---------------------------------------|
| Width: | 1,160 - 1,410 mm |
| Depth: | 1,145 mm |
| Height: | 1,710 - 1,885 mm |
| Weight: | 340 kg |
| Rotary current connection: | 200-230 VAC, 380-460 VAC, 50 or 60 Hz |
| Power consumption: | 2.8 kW |
| Three phase current connection: | 16 A |
| Compressed air: | 5-7 bar/0.5-0.7 MPa |
| Air consumption: | 1.6 NL/cycle |